

HOME FOR SALE



# THE SITKA

102 LILAC CLOSE  
LEDUC, AB

2099 SQFT | TWO-STORY



3 BEDROOMS



2.5 BATHROOMS



2 CAR GARAGE

## FLOOR PLAN FEATURES

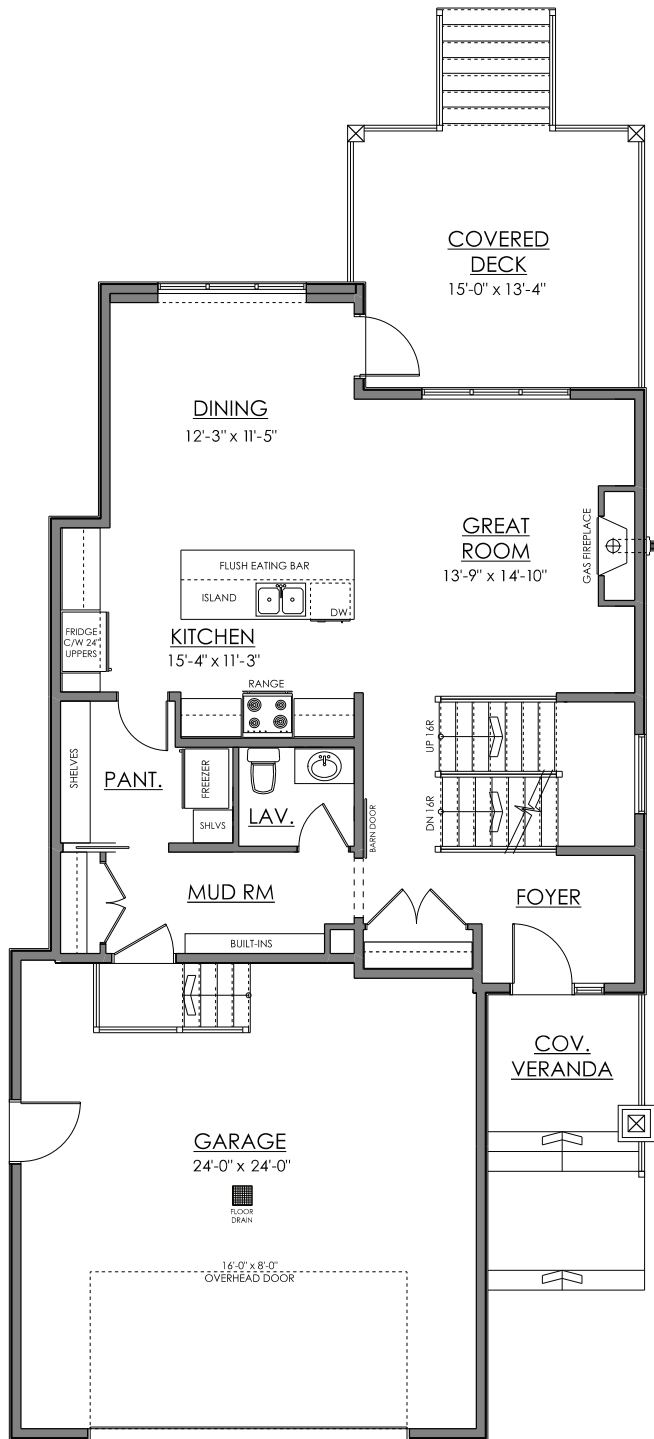
- 9' Wall Height for All Floors
- Walk-through Pantry
- Double Attached Garage
- 2nd Floor Laundry
- 3 Bedrooms Upstairs
- Covered Rear Deck

Woodbend

780.986.0941  
JACOBS-CONSTRUCTION.COM

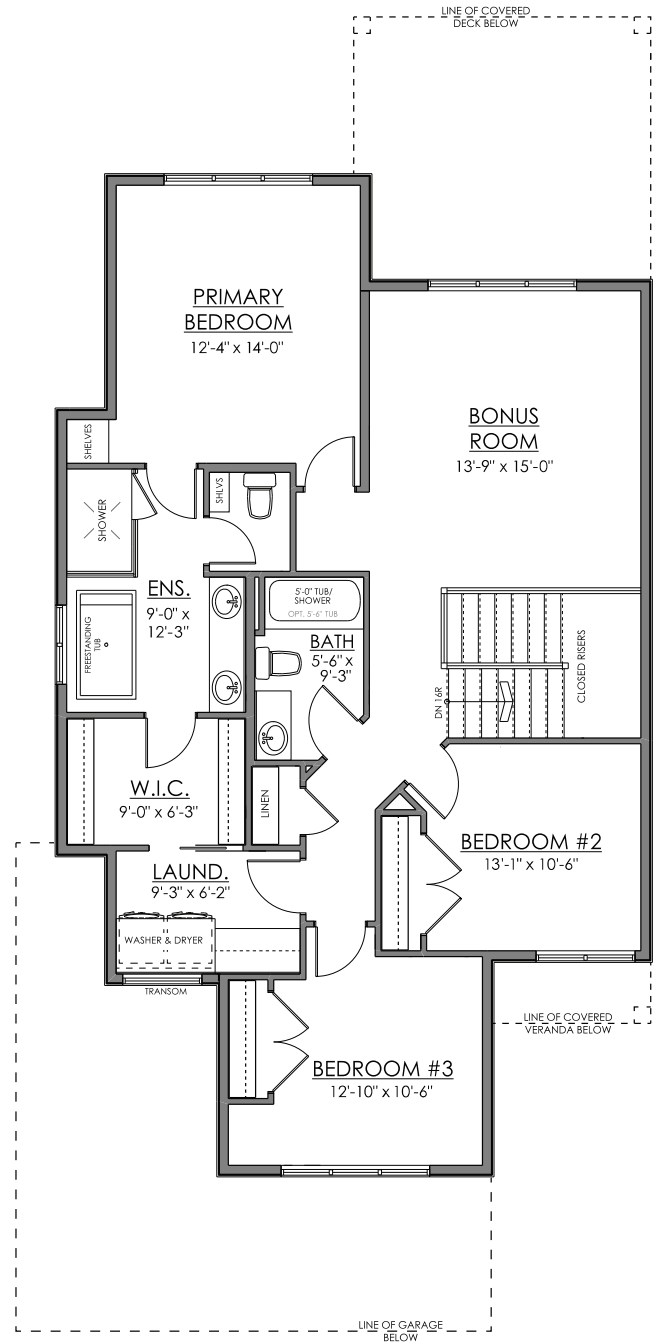
**JACOB'S**  
CONSTRUCTION LTD.





## MAIN FLOOR - 942 SQ.FT.

9'-1" MAIN FLOOR WALL HEIGHT



## SECOND FLOOR - 1157 SQ.FT.

9'-1" SECOND FLOOR WALL HEIGHT

Artistic concept only. Floor plans, specifications and dimensions are approximate and subject to change without notice.

780.986.0941  
JACOBS-CONSTRUCTION.COM

5/19/23

**JACOB'S**  
CONSTRUCTION LTD.